

LAND AUCTION

AGRIVEST, INC.
FARM MANAGEMENT & REAL ESTATE

AND

JAMES MICENHEIMER
AUCTION SERVICES

31.48 SURVEYED ACRES (30.54 TILLABLE) CHRISTIAN CO. IN TAYLORVILLE DEVELOPMENT OR FARMLAND

FEBRUARY 27, 2015, 10:00 AM, CHRISTIAN COUNTY EXTENSION

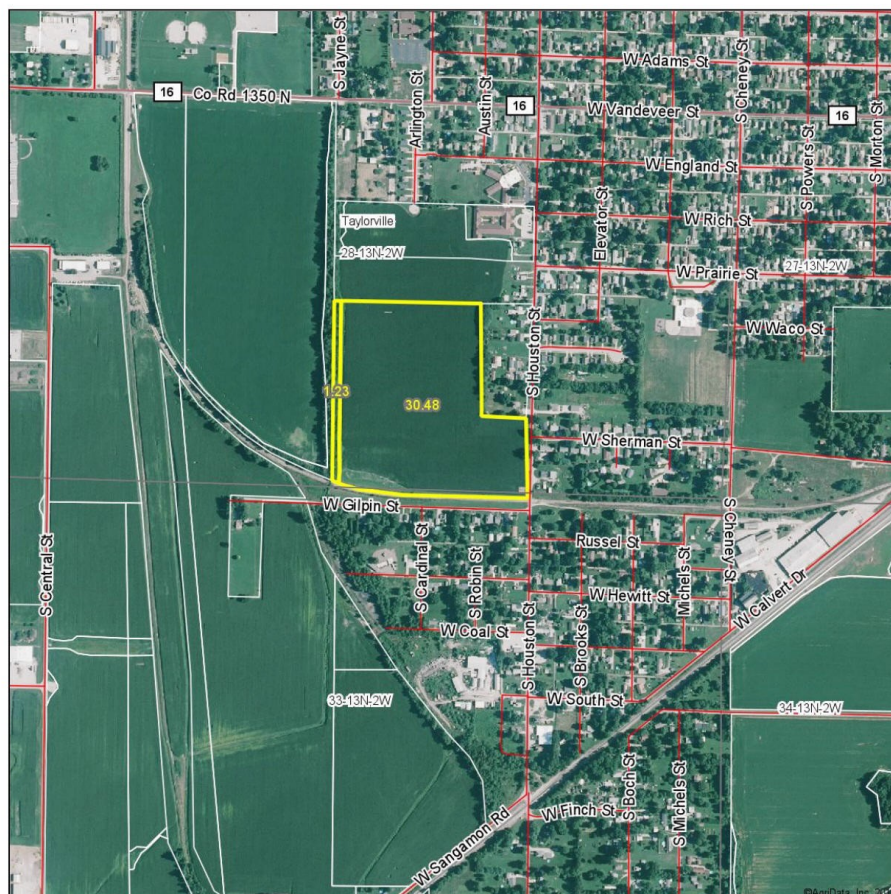
1120 N. WEBSTER ST., TAYLORVILLE, IL

LOCATION: FROM SPRESSER STREET, GO SOUTH ON HOUSTON STREET 14 BLOCKS. THE PROPERTY IS ON THE RIGHT OR WEST SIDE OF THE STREET.

SOILS: IPAVA, DENNY AND OSCO SILT LOAMS.

FOR MORE INFORMATION, CONTACT AGENTS OR SEE WEB SITES BELOW.

Aerial Map



AGRIVEST, INC

217-241-1101

WWW.AGRIVESTINC.COM

JAMES MICENHEIMER

AUCTION SERVICES

217-820-9324

217-824-9324

WWW.MICENHEIMER.COM

**OWNERS: FRANK, JOHN AND
TOM BARRINGER**

DISCLAIMER:

THE INFORMATION CONTAINED
HEREIN IS BELIEVED TO BE
ACCURATE, HOWEVER, IT IS SUBJECT
TO VERIFICATION AND NO
LIABILITY FOR ERRORS OR
OMISSIONS IS ASSUMED.
ANNOUNCEMENTS AT TIME OF
AUCTION SHALL TAKE PRECEDENCE
OVER ALL INTERNET AND PRINTED
MATERIAL.



28-13N-2W
Christian County
Illinois

map center: 39° 32' 21.09, 89° 18' 47.03

scale: 9606



1/23/2015